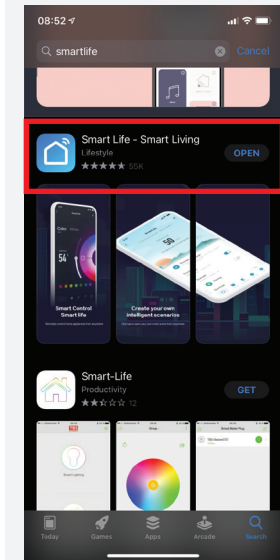


Wi-Fi Thermostats SmartLife Connection

Thank you for purchasing one of our products and for your support.

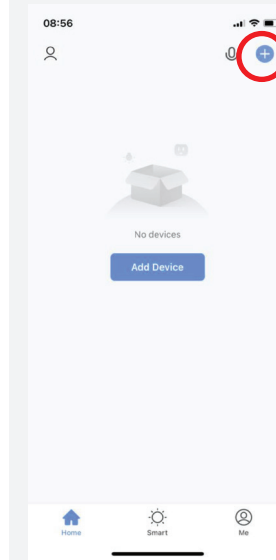
1

Download the Smart Life app from the IOS or Android Store. And create a unique account and password.



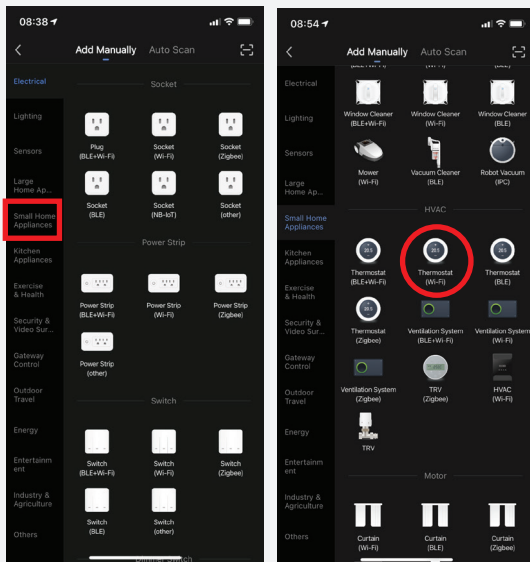
2

In the home screen of smart life. Press on the area highlighted to add a thermostat to the App.



3

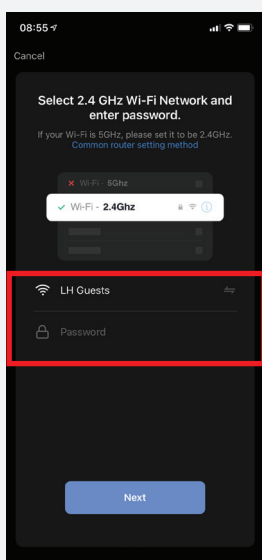
On the next screen please select small home appliances and then search the list until you reach thermostat (Wi-fi).



4

Select your Wi-Fi network and enter the Password for your router at home.

Press Next.

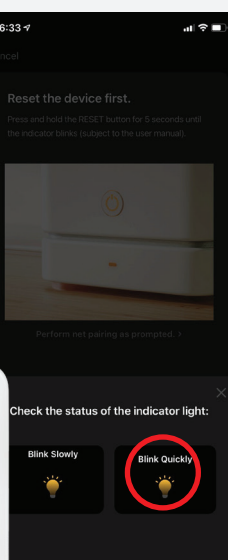


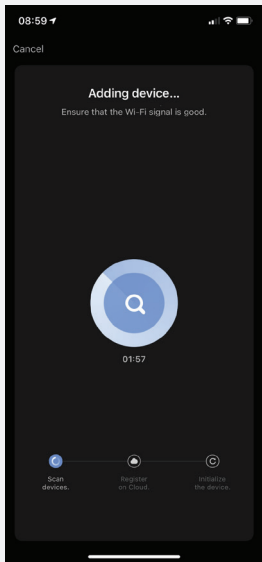
5

To get the thermostat ready to pair to device/app, hold Set & OK buttons on the thermostat until both cloud & wi-fi symbol appear flashing together.

If cloud only appears then let go and then press Set & OK button again until both symbols appear on left of screen.

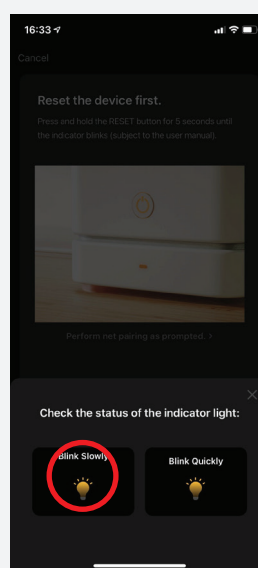
Please also make sure device is reset first. Once both symbols appear on screen of thermostat, select blink quickly after tapping next on reset the device screen (see screen shot).





6

The thermostat should now pair to the device.



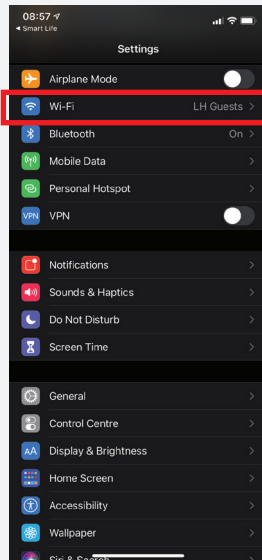
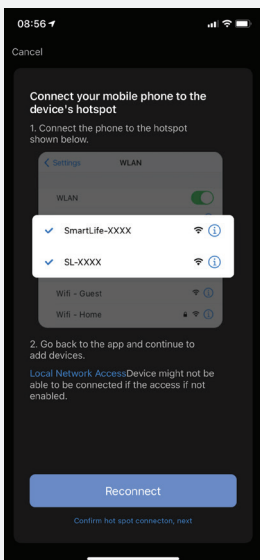
7

If the thermostat fails to connect to the thermostat then repeat steps 2,3 and 4.

hold down the Set and OK button until the cloud symbol only appears on the thermostat screen.

Select blink slowly at the bottom left of screen on the smartlife app.

Press go to connect on next page.

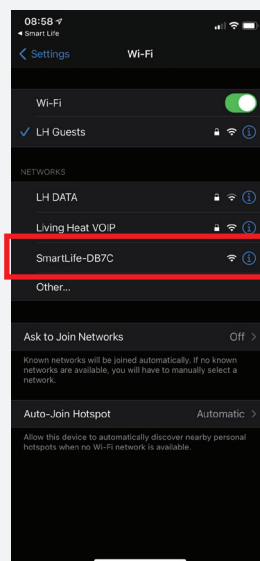


8

This should take you directly Into your phone settings (See Below).

If not then exit app (Don't Close) and go into settings as shown on below (Middle Screenshot).

Then select Smart Life in 'my Networks' or 'wi Fi Network'



9

You should then be directed back to the app. If not go back into the app and the countdown screen should appear.

The thermostat should now pair to the device.

ANDROID APP



IOS APP

